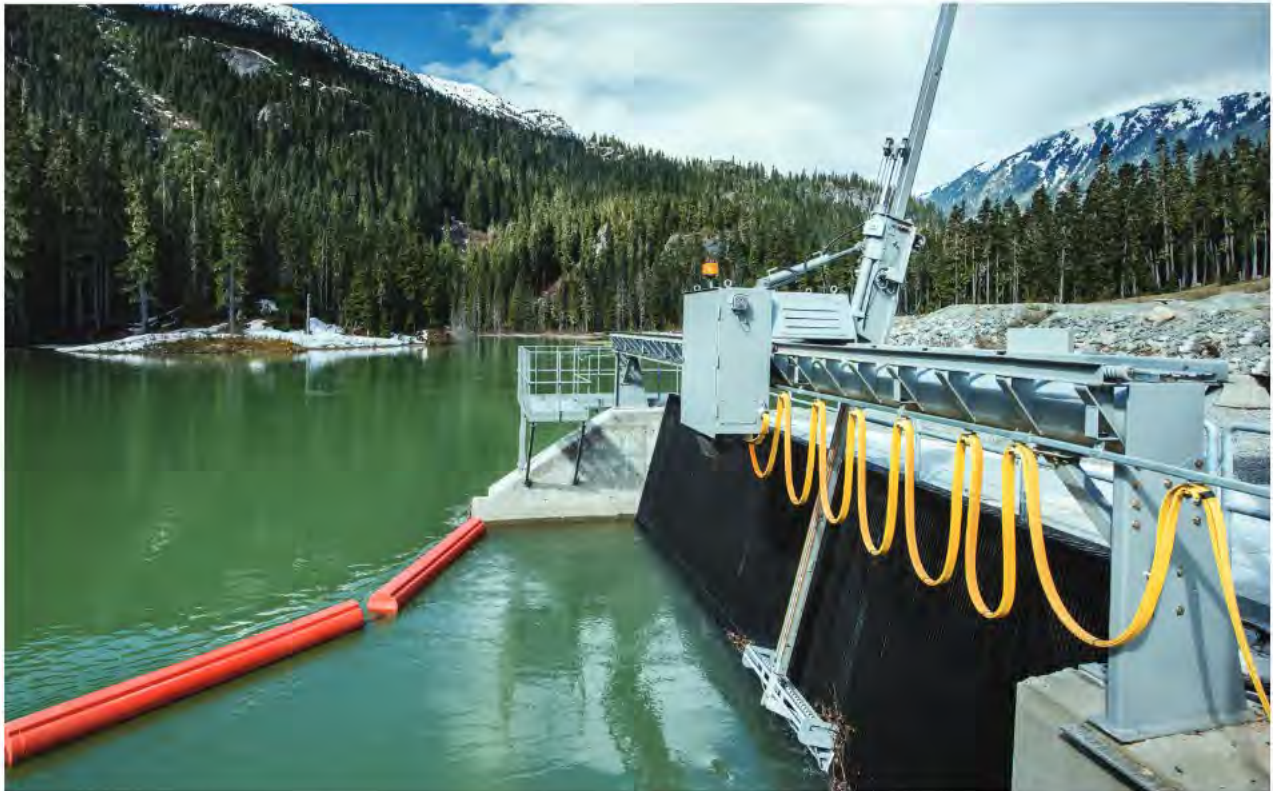


## Atlas Polar's Waterways Systems for the Hydro Market



An Atlas Polar Hydrorake system.

**A**tlas Polar is a Canada-based heavy equipment company with a number of product lines of interest to the hydropower industry. In this interview, Division Manager Bill Dimopoulos tells us about a number of its waterways systems.

**Hydro Leader:** Please tell us about Atlas Polar's history and current services.

**Bill Dimopoulos:** Atlas Polar is one of North America's oldest heavy equipment companies and has been servicing diverse industries for nearly 85 years. We began with the world's leading brands of truck-mounted equipment, but we are always motivated by our customers' needs. Engineering innovative solutions for their waterways challenges was a natural evolution. For them, it all comes down to cost, productivity, and safety. That is what our equipment delivers.

We pioneered our first waterways system, the Atlas Polar Stop Log Lifter, in 1971—replacing manual labor with a safer, simpler, more efficient, and more cost-effective solution to manage the placement of logs at dam sections to control water flow. Stop Log Lifter systems are fully

adaptable and enable a single operator to remove, stack, retrieve, and replace logs in a sluiceway.

We launched our Hydrorake waterway debris-management systems in 1976. Field tested and field proven in the most diverse and extreme conditions, they quickly became the North American standard. They have been North America's top-selling waterway debris systems for over 46 years. More than 500 installations across the continent trust Hydrorake systems to ensure clean, constant water flow, 24/7. The numbers speak for themselves.

Atlas Polar has continued to design, manufacture, and service innovative new customer-driven waterway equipment solutions for five decades. Our fish-friendly Hydrobrush systems launched in 1996. They gently clean screens to maintain essential constant water flow in spillways, fish monitoring facilities, and pump and transfer facilities. Inefficient debris cleaning can clog spillway openings and conveyance systems, decrease flood storage capacity, and threaten marine life and public health.

Hydrobrush systems improve cleaning with constant screen pressure that adapts to various depths and rising floors. Brushes travel horizontally below the waterline at precisely



controlled variable speeds and can automatically clean screens in positions ranging from vertical to a 30-degree angle. Atlas Polar Hydrobrush equipment meets stringent U.S. and Canadian fish and wildlife protection regulations.

The most recent addition to Atlas Polar's waterway systems lineup is our state-of-the-art reinforced high-density polyethylene Polar Racks, introduced in early 2018—yet another Atlas Polar product that has become an industry standard in North America. Our continually extruded rack blades are virtually indestructible, resisting everything that can impede water flow, including impacts, frazil ice, anchor ice, destructive marine growth, and UV damage. Atlas Polar Racks are fish friendly and meet strict environmental standards. Not just effective but also cost effective, they are ideal for power generation plants, pulp and paper mills, municipal water intakes, waste treatment plants, and other applications.

**Hydro Leader:** Please tell us more about your Hydrorake line. How does it differ from other trash rake and screen-cleaning solutions?

**Bill Dimopoulos:** Let's begin with why we designed our Hydrorake systems. The answer is to ensure constant, reliable, trusted water flow 24/7, regardless of environmental conditions. Hand-raking can't guarantee that, though that method is still frequently used after over 100 years. Inefficient trash handling in our hydroelectric plants can damage turbines, decrease power generation, and cause power outages. A solution was needed to ensure those things would never happen, and we have succeeded in providing one. Our customers trust Hydrorake systems to provide highly efficient, cost-effective, reliable, safe waterway management with lower labor and lifetime costs. We have Hydrorake systems that were installed more than 40 years ago that continue to perform as new.

Atlas Polar Hydrorake systems are the top-selling trash rake cleaning systems in North America because they have seen and withstood it all. They have been tested and proven in the most extreme conditions. More than 500 installations in facilities with different requirements rely on them every day in different environments in different parts of the country.

We have three customizable systems: the single-boom ST9000 and the DT9250 and DT9300 double-boom models. You can set them to clean any gauge screen or bar rack automatically. They work with almost any bar spacing or incline and are fully scalable. Multiple units can be used simultaneously for large volumes of debris, as is the case at the Bureau of Reclamation fish screen protection barrier in central Washington State. A flexible human-machine interface screen allows operational sequencing to any flow or debris condition at each intake. Raking booms are telescopic and work at depths of 34–70 feet below the waterline. Customers can add an optional heavy-duty conveyor system to move debris to a collection site on either side of the intake.


Hydrorake systems are entirely flexible and customizable. Customers can set the frequency of the raking schedule to trigger by time, cycles, and water differential and to run continuously or on a defined schedule. They can be set either manually or automatically using an Atlas Polar remote-control system.

Beyond their unparalleled reliability, Atlas Polar Hydrorake trash rack systems have a unique and significant safety and logistics advantage. The systems are offset, not mounted off deck, ensuring minimal interference for existing equipment and freedom of movement for personnel.

**Hydro Leader:** What kind of service do you supply to customers?

**Bill Dimopoulos:** Service that is as reliable and trusted as our brands. We built our reputation on it, and it has served us well. We have dedicated North American locations that sell, install, and service our waterways equipment. Customers can contact us for troubleshooting support by telephone, online, and on site.

**Hydro Leader:** What results have customers seen from your product?

**Bill Dimopoulos:** Being the number 1 waterway management brand in North America for more than 46 years speaks for itself. So do our more than 500 trouble-free installations. Just ask them. 



An Atlas Polar Stop Log Lifter system.

*Bill Dimopoulos is a division manager at Atlas Polar. For more on Atlas Polar's waterway solutions, visit [www.atlaspolar.com/trash-rake/](http://www.atlaspolar.com/trash-rake/).*